

CURVE DATA #1
 PI = 62+46.33
 D = 1°56'00.0"
 Δ = 9°30'11.1" Rt.
 R = 2963.56'
 L = 491.54'
 T = 246.38'
 E = 10.27'

STATE OF MAINE
 DEPT. OF TRANSPORTATION
 VOL. 1125 PAGE 365 (1958)

CURVE DATA #1
 PI = 201+73.40
 D = 17°37'46.1"
 Δ = 27°34'46.8" Lt.
 R = 325.00'
 L = 156.44'
 T = 79.77'
 E = 9.65'

CURVE DATA #2
 PI = 20+93.67
 D = 3°30'00.0"
 Δ = 14°18'27.6" Rt.
 R = 1637.02'
 L = 408.79'
 T = 205.46'
 E = 12.84'

U. S. ROUTE 95
 STATE HIGHWAY "95"

S.H.C. FILE NO. 6-87 (1958)

CURVE DATA #1
 PI = 400+91.93
 D = 52°05'13.5"
 Δ = 55°36'34.2" Lt.
 R = 110.00'
 L = 106.76'
 T = 58.01'
 E = 14.36'

CURVE DATA #2
 PI = 401+90.18
 D = 28°56'14.1"
 Δ = 28°04'24.3" Lt.
 R = 198.00'
 L = 97.01'
 T = 49.50'
 E = 6.09'

STATE OF MAINE
 DEPARTMENT OF TRANSPORTATION
 BRIDGE NO. 6908
 WIN
 21672.00
 BRIDGE PLANS

FINAL PDR SUBMISSION 5/26/2022

DATE	BY	REVISIONS
MAY 2022	KW/PLP	DESIGN-DETAILED
MAY 2022	TW/MLM	CHECKED-REVIEWED
MAY 2022	THG/DB	DESIGN-DETAILED PAS
MAY 2022		DESIGN-DETAILED
		REVISIONS 1
		REVISIONS 2
		REVISIONS 3
		REVISIONS 4
		FIELD CHANGES

WESTERN AVENUE BRIDGE
 INTERSTATE 95
 KENNEBEC COUNTY
 AUGUSTA
 GENERAL PLAN

SHEET NUMBER
 2
 OF 12

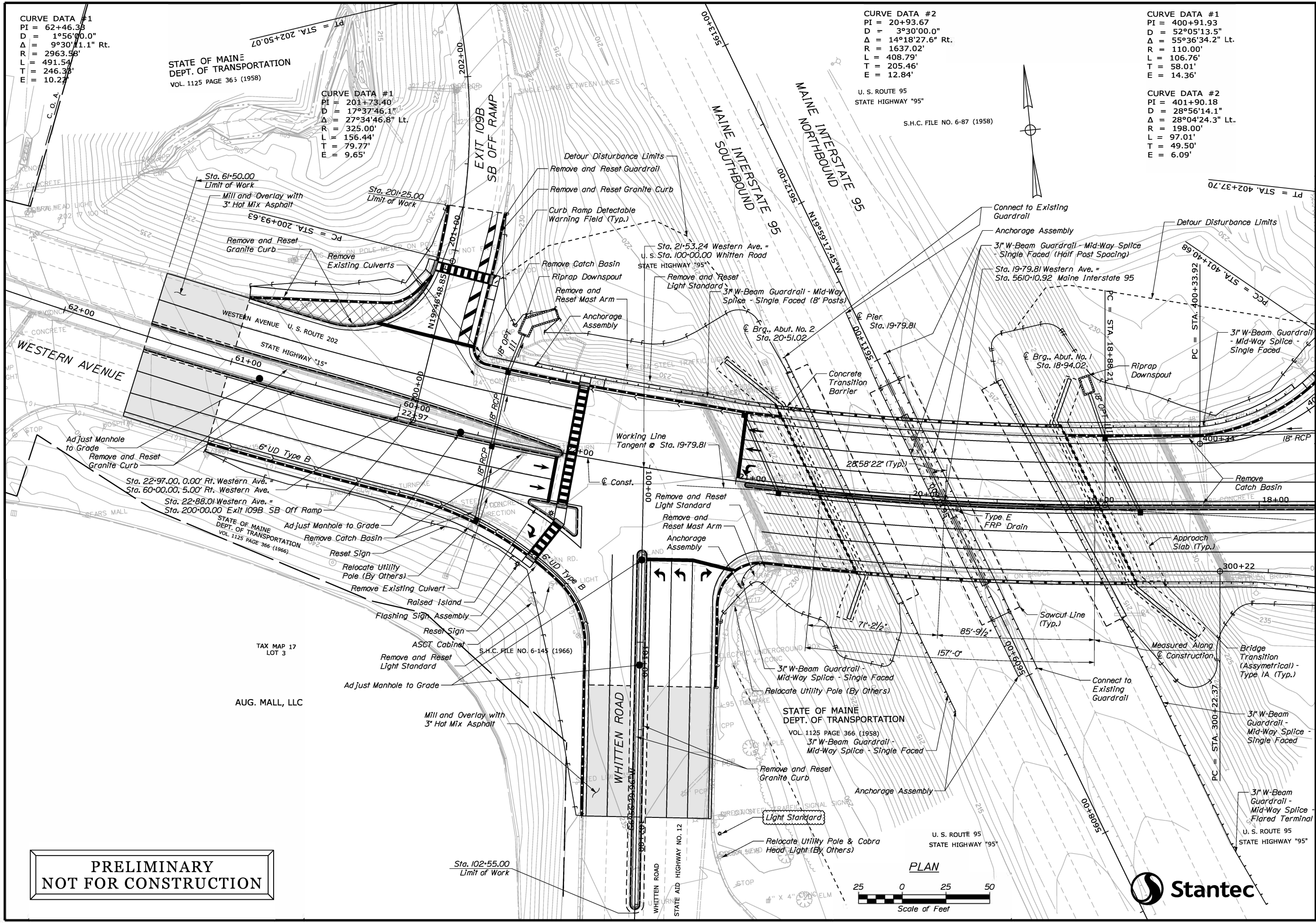
Date: 5/26/2022

Username: kwight

Division: BRIDGE

Filename: ... \00\BRIDGE\MSTA\002_Plan.dgn

**PRELIMINARY
 NOT FOR CONSTRUCTION**



Date: 5/26/2022

Username: kwight

Division: BRIDGE

Filename: ... \001\BRIDGE\MSTA\003_Plan.dgn

CURVE DATA #1
 PI = 400+91.93
 D = 52°05'13.5"
 Δ = 55°36'34.2" Lt.
 R = 110.00'
 L = 106.76'
 T = 58.01'
 E = 14.36'

CURVE DATA #2
 PI = 401+90.18
 D = 28°56'14.1"
 Δ = 28°04'24.3" Lt.
 R = 198.00'
 L = 97.01'
 T = 49.50'
 E = 6.09'

CURVE DATA #2
 PI = 503+23.25
 D = 28°38'52.4"
 Δ = 49°14'54.3" Rt.
 R = 200.00'
 L = 171.91'
 T = 91.67'
 E = 20.01'

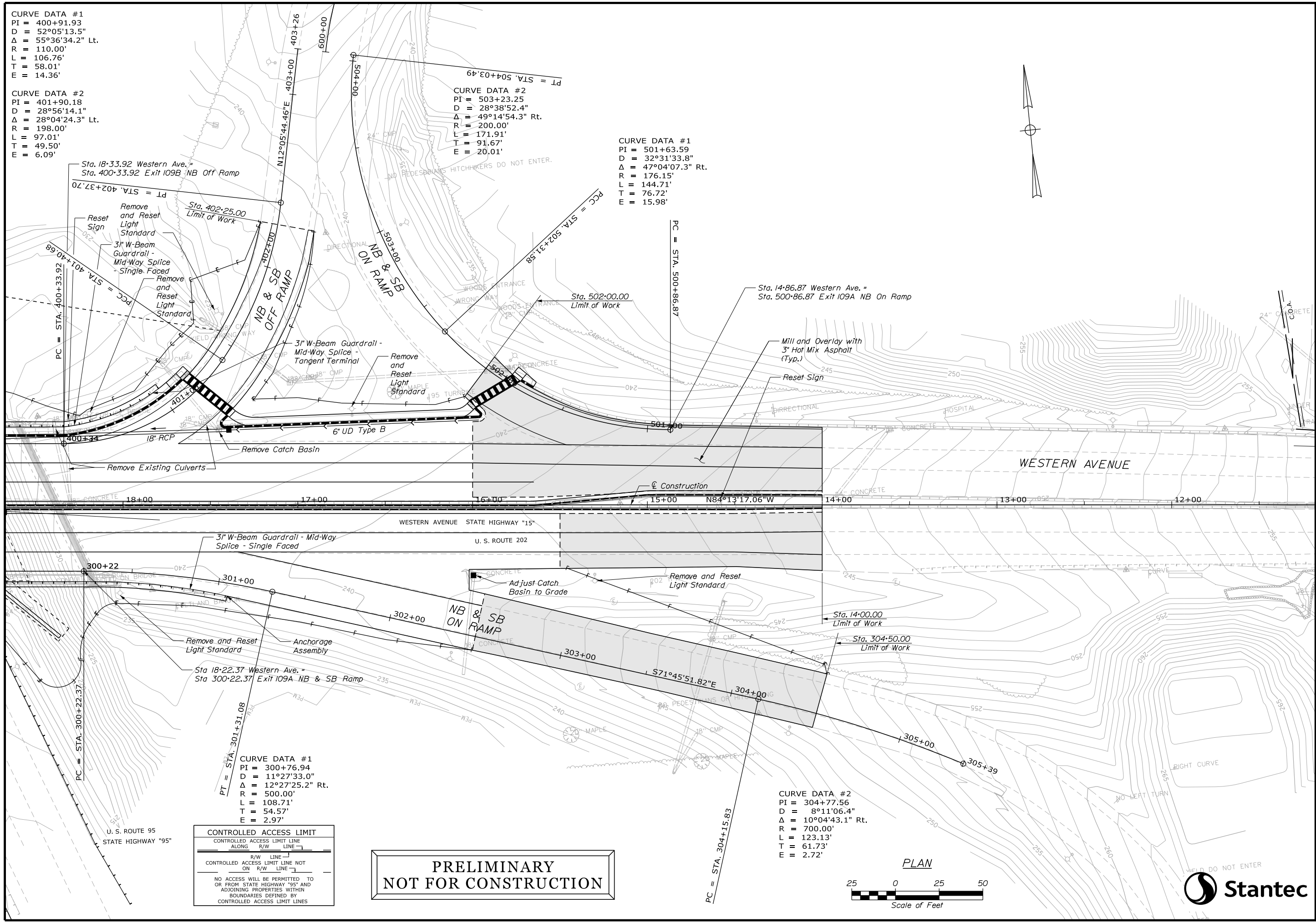
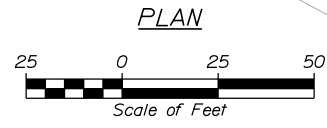
CURVE DATA #1
 PI = 501+63.59
 D = 32°31'33.8"
 Δ = 47°04'07.3" Rt.
 R = 176.15'
 L = 144.71'
 T = 76.72'
 E = 15.98'

CURVE DATA #1
 PI = 300+76.94
 D = 11°27'33.0"
 Δ = 12°27'25.2" Rt.
 R = 500.00'
 L = 108.71'
 T = 54.57'
 E = 2.97'

CURVE DATA #2
 PI = 304+77.56
 D = 8°11'06.4"
 Δ = 10°04'43.1" Rt.
 R = 700.00'
 L = 123.13'
 T = 61.73'
 E = 2.72'

CONTROLLED ACCESS LIMIT
 CONTROLLED ACCESS LIMIT LINE ALONG R/W LINE
 CONTROLLED ACCESS LIMIT LINE NOT ON R/W LINE
 NO ACCESS WILL BE PERMITTED TO OR FROM STATE HIGHWAY "95" AND ADJOINING PROPERTIES WITHIN BOUNDARIES DEFINED BY CONTROLLED ACCESS LIMIT LINES

**PRELIMINARY
 NOT FOR CONSTRUCTION**



STATE OF MAINE		DEPARTMENT OF TRANSPORTATION		BRIDGE NO. 6608		WIN		21672.00		BRIDGE PLANS	
FINAL PDR SUBMISSION 5/26/2022											
DATE		BY		SIGNATURE		P.E. NUMBER		DATE			
MAY 2022		KLV/PLP		MAY 2022							
MAY 2022		TMA/LEM		MAY 2022							
MAY 2022		THC/UB		MAY 2022							
DESIGN-DETAILED		CHECKED-REVIEWED		DESIGN-DETAILED		REVISIONS 1		REVISIONS 2		REVISIONS 3	
KLV/PLP		TMA/LEM		THC/UB		PAS		PAS		PAS	
DESIGN-DETAILED		DESIGN-DETAILED		DESIGN-DETAILED		REVISIONS 4		REVISIONS 4		FIELD CHANGES	
PAS		PAS		PAS		PAS		PAS		PAS	
WESTERN AVENUE BRIDGE INTERSTATE 95 AUGUSTA KENNEBEC COUNTY GENERAL PLAN											
SHEET NUMBER 3 OF 12											